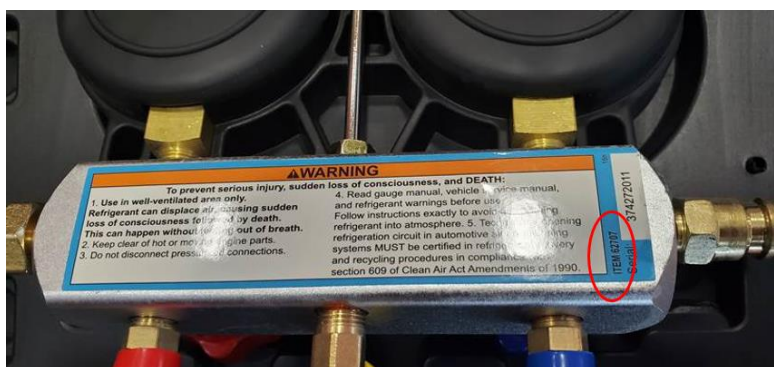


SAFETY RECALL

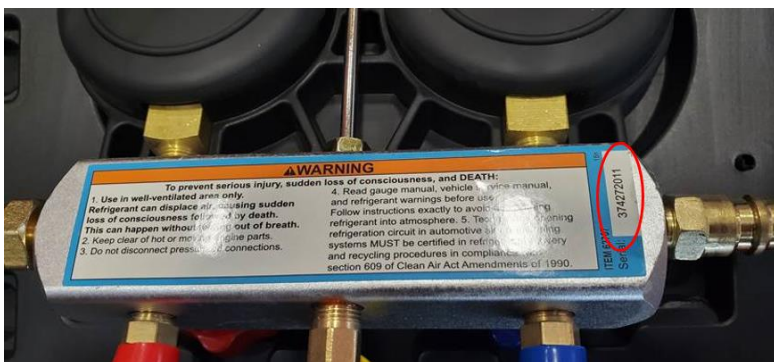
Pittsburgh Automotive AC Manifold Gauge Set Item Number 62707

For certain units of the Pittsburgh Automotive AC Manifold Gauge Set, the high pressure and low pressure manifold and coupler valve labels may have been erroneously switched on their knobs during the factory labeling process – with reversed instructions as to the direction to open or close the valves. If the couplers are attached to your vehicle in the open position, this could cause serious injury to people near a vehicle when the AC Manifold Gauge Sets are in use, and/or damage to property.

THIS RECALL ONLY CONCERNS SELECT BATCHES OF AC MANIFOLD GAUGE SET ITEM NUMBER 62707. The affected units were produced between March 23, 2020 and May 17, 2020. The AC Manifold Gauge Set item number 62707 can be identified by checking the item number found on the label on the back of each AC Manifold Gauge Set. The affected batch codes are: 374272013, 374272014, 374272015 and 374272020.



You must check to see if your unit was produced during this timeframe by checking the serial number located on the back of the manifold gauge.



If you have one of these items, STOP USING THESE AC MANIFOLD GAUGE SETS IMMEDIATELY. DO NOT RETURN THE ITEM TO THE STORE. Request replacement labels and instructions by visiting:

http://images.harborfreight.com/hftweb/recalls/AC_Manifold_Gauge_Submission_Form_62707.pdf ,
or email recall@harborfreight.com.